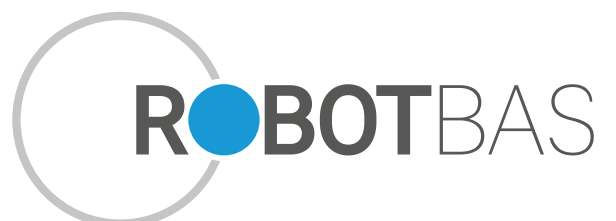
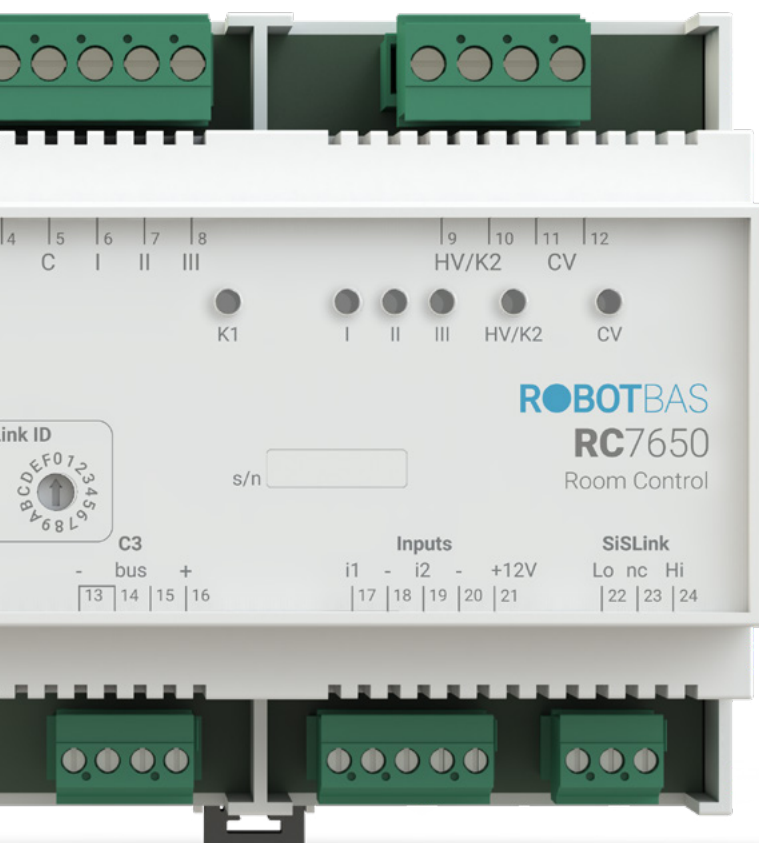
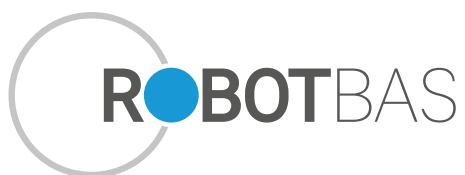


R7000 Series



**Spain | Headquarters**

Gremi de Cirurgians i Barbers, 22
Polígono Industrial Son Rossinyol
07009 Palma de Mallorca
T. +34 971 244 471

Dominican Republic

Plaza Boulevard Center. Locales 4 y 6,
Carretera Higüey-Miches
Bávaro, República Dominicana
T. +1 829 380 4732

Mexico

Av. Bonampark Manzana 1, Lote 4 y 5
Local C 9, Super Manzana 8
Cancun Quintana Roo, 77500
T. +52 1 998 195 9060

www.robotbas.com | info@robotbas.com

Robot

Robot, S.A. is a company specialized in building automation systems and domotic. We have made more than 800 projects over 40 years, hand in hand with the most important hotel brands in the world.

With the incorporation of Robot, S.A. to the BME Growth Market in February 2018, and the company's new international expansion plan, Robot launched ROBOTBAS, a brand responsible for the design, manufacture, marketing, installation and maintenance of Robot's building control systems.

In this way, the creation of ROBOTBAS allows Robot, S.A. to focus on the relationship with its investors, and on the development of a brand structure that favor the future diversification of the business model.

ROBOTBAS

ROBOTBAS offer installation, commissioning, maintenance and remote support services for our building control systems, with the possibility of obtaining a turnkey project. Thanks to the participation in works from the project to the start-up, in ROBOTBAS we have all the experience acquired over the years by Robot, allowing us to improve and anticipate the needs of each installation.

We work with the main hotel brands

PALLADIUM
HOTEL GROUP

IBEROSTAR
HOTELS & RESORTS

USHUAIA
UNEXPECTED HOTELS

The Excellence
Collection

HYATT®

MELIÀ HOTELS
INTERNATIONAL

Hard Rock
HOTEL

W
HOTELS
WORLDWIDE

Hilton
HOTELS & RESORTS

OnlyYOU
HOTELS

MARRIOTT

Barceló
HOTEL GROUP

PESTANA

RIU
HOTELS & RESORTS

ZAFIRO
HOTELS

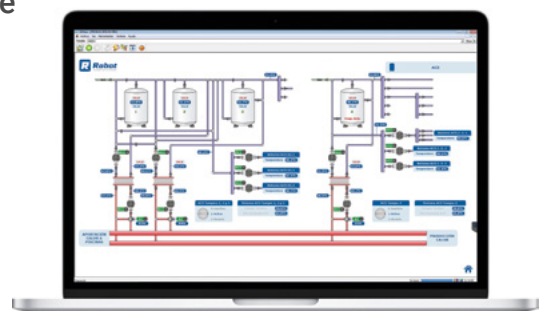


Industrial Control

ROBOTBAS offers more than 40 years of experience in technical installations. Our industrial control system aims to solve the specific needs of each client, provide specialized products, simplify their use and maintenance and integrate it with all control systems of the installation.

Advantages of ROBOTBAS industrial control system

1. Products designed with **robust technology**, specially designed for industrial environments.
2. Possibility to integrate with any device by Modbus, M-Bus or BACnet.
3. Unlike the competition, our devices can be controlled from the front keypad that they have incorporated or by remote control, **simplifying the start-up and maintenance** of the installation.
4. The **SCADA interface is designed to be simple and intuitive**, customized for each project.
5. **We monitor and record the data** of the whole installation, being able to identify trends graphically.
6. Customization of the alarms and the regulation program according to the needs of each client.
7. **Instantaneous information of the rooms**, which allows to adapt the production of water for air conditioning and ACS to the real needs of each moment.
8. **Control of all installation components from the same system**, simplifying its supervision and maintenance.



Industrial Control



DC7740
Distributed Controller



RP7910
CAN Repeater



ZC7920
Zone Coupler



ZC7926
Zone Coupler



IF7940
Interface

Family	Reference	Description
Distributed Control	DC7740	Universal Controller with Ethernet/SiSLink Gateway.
CAN Repeater	RP7910	Active Repeater for SiSLink/CAN Bus.
Zone Coupler	ZC7920	Zone Coupler for SiSLink/CAN bus.
Zone Coupler	ZC7926	Zone Coupler for SiSLink/IP (Ethernet).
Interface	IF7940	SiSLink - RS485 Interface. Optoisolated.



TC7177
Tiny Control



TC7170
Tiny Control



TC7172
Tiny Control



TC7173
Tiny Control



TC7174
Tiny Control

Family	Reference	Description
Tiny Control	TC7170	Industrial module with 8 analog inputs RTD, 0..10V, 4..20mA.
Tiny Control	TC7172	Industrial module with 8 digital free-voltage inputs.
Tiny Control	TC7173	Industrial module with 8 digital dry contacts of 10A outputs.
Tiny Control	TC7174	Industrial module with 4 analog inputs RTD, 0..10V, 4..20mA + 4 analog outputs 0..10V.
Tiny Control	TC7177	Industrial module with 4 digital free-voltage inputs + 4 digital dry contacts outputs.

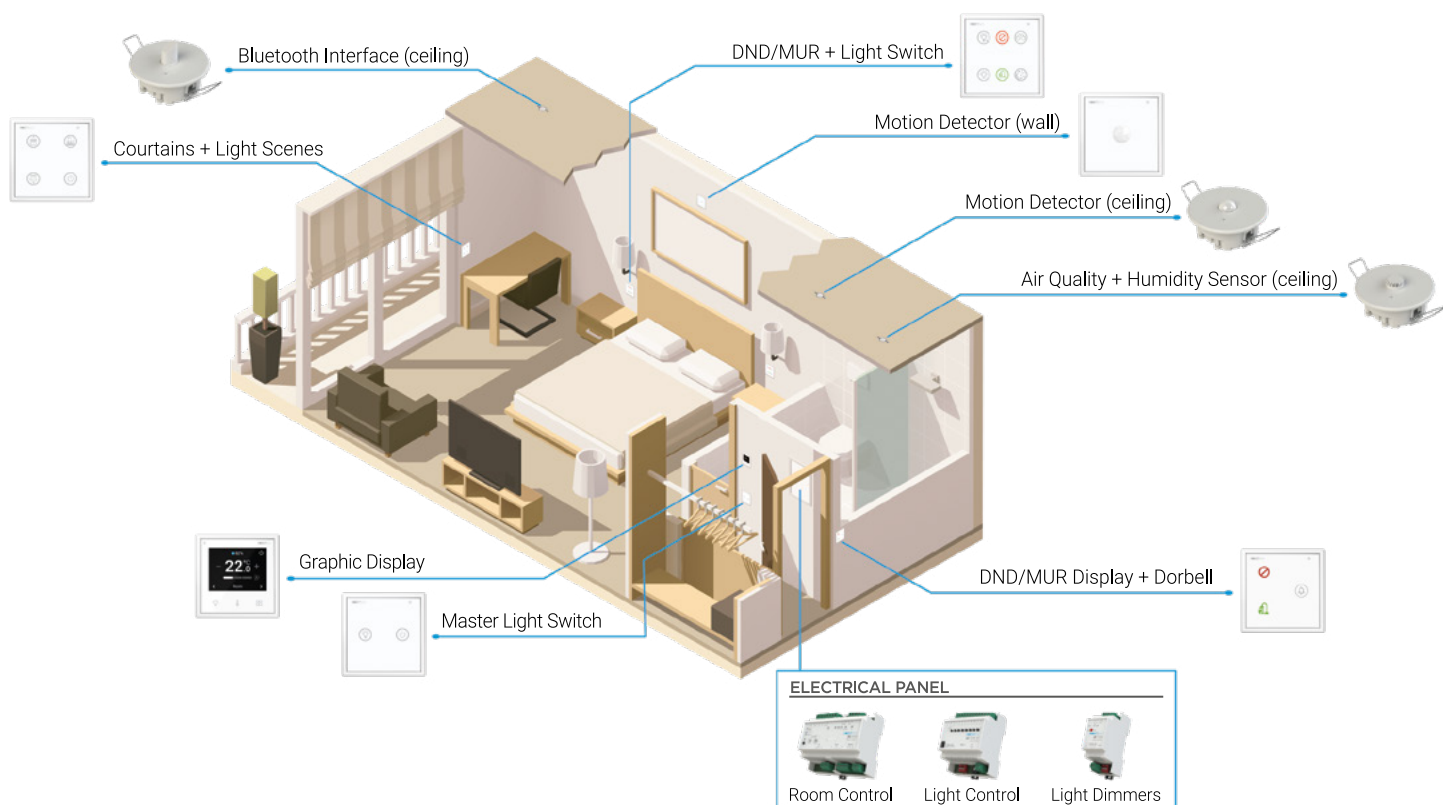
Rooms solutions

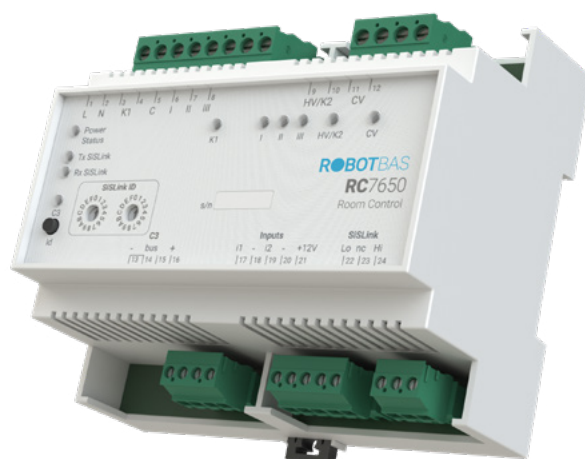
The installation and maintenance of the room control system does not require specialized staff. Thanks to the C3 bus technology developed by ROBOTBAS, the **room devices are easy to install; we are talking about true plug&play**. The communication of the devices by C3 bus, and the use of 2-wire cables without polarity, allows to reduce the wiring considerably, reducing costs and simplifying the assembly and maintenance of these.

The start-up and configuration of the devices is done through a guided process, and allows to establish different levels of use roles. Through the Quicklook you can obtain an **overview of all the rooms in real time**, simplifying the supervision of the installation.

All this **facilitates both the installation process and maintenance**, allow the building's own technical team to manage the system. But in case of needing it, ROBOTBAS offers its customers a maintenance and remote control service guaranteeing the correct functioning of the system at all times.

The ROBOTBAS devices that control presence, lighting, temperature and humidity are compatible today with the frames of Jung, Bticino, Niessen and Simon, enabling the unification of the design and the image of the hotel. Likewise, being the manufacturers of our devices allows us to offer our clients a **personalized iconography** that satisfies their design and needs.





RC7650
Room Control



RC7610
Room Control



RC7614
Room Control



RC7616
Room Control



RC7620
Room Control



RC7636
Room Control

Family	Reference	Description
Room Control	RC7610	Room controller. Includes: 1 clime zone (2 pipes), 8 light points and 4 scenes.
Room Control	RC7614	Room controller special for Caribbean. Includes: 2 clime zones, 24 light points, 8 dimmers, 8 scenes, 4 blind actuators and humidity control.
Room Control	RC7616	Room controller. Includes: 2 clime zones (4 pipes), 1 radiating floor, 24 light points, 8 dimmers, 8 scenes and 4 blind actuators.
Room Control	RC7620	Multipurpose room controller. Includes: DMX controller, corridor lighting controller, scene controller and climate control.
Room Control	RC7636	Room controller. Analogic outputs for valves. Includes: 2 clime zones (4 pipes), 1 radiating floor, 24 light points, 8 dimmers, 8 scenes and 4 blind actuator.
Room Control	RC7650	Room Controller of 32 bits. Includes: 3 clime zones (4 pipes), 2 radiating floor, 24 light points, 24 dimmers, 16 scenes and humidity control.

Rooms solutions



LC7208
Light Control



LC7201
Light Control



LD7230
Light Dimmer



LD7260
Light Dimmer



PS403N
Power Supply

Family	Reference	Description
Light Control	LC7201	1 relay 16A output actuator with High Inrush technology.
Light Control	LC7208	8 relay 16A outputs actuator with High Inrush technology.
Light Dimmer	LD7230	0/1-10 V _{DC} output dimmer.
Light Dimmer	LD7260	Phase cutting 230 V _{AC} 300 W dimmer, with IGBT technology.
Power Supply	PS403N	Power supply for C3 bus with auxiliary output of 15 V _{DC}



MD7315
Motion Detector



TH7306
Temperature and
Humidity Sensor



BI7580
Bluetooth Interface



LD7253
Light Dimmer



BA7222
Blind Actuator

Family	Reference	Description
Motion Detector	MD7315	Infrared motion detector for false ceiling.
Temperature and Humidity Probe	TH7306	Temperature and relative humidity probe for false ceiling.
Bluetooth Interface	BI7580	Bluetooth interface for C3 bus.
Light Dimmer	LD7253	RGB LED dimmer with 3 PWM outputs x 2 A.
Blind Actuator	BA7222	Two toggled 10A relay outputs actuator for blind control.



Rooms solutions

Touch switches, motion detectors, temperature probes and displays for climate control and indicators for room service with frames compatible with **LS990**. These glass touch switches are made with Gorilla Glass and anti-fingerprint treatment.



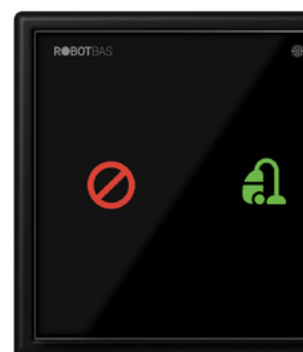
Light Switch
LS7544 JLS



Motion Detector
MD7310 JLS



Fan coil Display
FD7555 JLS



DND/MUR
SD7530 JLS

Check availability of frames colours,
number and personalization of functions and iconographies.

Product	Reference	Description
Light Switch	LS7241 JLS	1 function touch switch.
Light Switch	LS7242 JLS	2 functions touch switch.
Light Switch	LS7543 JLS	3 functions touch switch.
Light Switch	LS7544 JLS	4 functions touch switch.
Light Switch	LS7546 JLS	6 functions touch switch.
Motion Detector	MD7310 JLS	Infrared motion detector with 10 meters detection range.
Fan coil Display	FD7555 JLS	Climate display for control one Fan coil or VRV.
Service Display	SD7530 JLS	Service Display: Do not Disturb + Room Service.



Rooms solutions

Touch switches, motion detectors, temperature probes and displays for climate control and indicators for room service with frames compatible with **LivingLight** and **Axolute**.



Light Switch
LS7240/2 Lx



Fan coil Display
FD7525 Lx



Light Switch
LS7240/2 Hx



Fan coil Display
FD7525 Hx

Check availability of frames colours, number and personalization of functions and iconographies.

Product	Axolute	Living Light	Description
Light Switch	LS7240/1 Hx	LS7240/1 Lx	1 function touch switch.
Light Switch	LS7240/2 Hx	LS7240/2 Lx	2 functions touch switch.
Motion Detector	MD7310 Hx	MD7310 Lx	Infrared motion detector with 10 meters detection range.
Temperature Sensor	TS7301 Hx	TS7301 Lx	Ambient temperature probe.
Fan coil Display	FD7525 Hx	FD7525 Lx	Climate display for control one Fan coil or VRV.
Service Display	SD7330 Hx	SD7330 Lx	Service Display: Do not Disturb + Room Service.



Rooms solutions

Touch switches, motion detectors, temperature probes and indicators for room service with frames compatible with **S82**.



Light Switch
LS7240/1 S82x



Light Switch
LS7240/2 S82x



Light Switch
LS7240/3 S82x



DND/MUR
SD7330 e S82x

Check availability of frames colours,
number and personalization of functions and iconographies.

Product	Reference	Description
Light Switch	LS7240/1 S82	1 function touch switch.
Light Switch	LS7240/2 S82	2 functions touch switch.
Light Switch	LS7240/3 S82	3 functions touch switch.
Motion Detector	MD7310 S82	Infrared motion detector with 10 meters detection range.
Temperature Sensor	TS7301 S82	Ambient temperature probe.
Service Display	SD7330 S82	Service Display: Do not Disturb + Room Service.

MyRoom: The ROBOTBAS application al- lows you to control the room by bluetooth

MyRoom presents an intuitive user interface through which **customers can interact with their room directly** from their iOS or Android device.

The communication between the device and the room is made through Bluetooth 4.0, which guarantees a stable and secure connection. With this application, hotel guests can **control the air conditioning and lighting of their room.**



How does it work?

Once the guest arrives at the hotel, he can link the data of the reservation with the ROBOTBAS Room Control application using a QR code.

Once linked, the user will have access to the control of lighting and scenes, air conditioning, blinds and shower of the room. The application will be automatically linked each time the guest enters the room, without having to repeat the link process.



What allows to control?

The Room Control application allows to control the air conditioning, lighting (at the point of light or lighting scene), blinds and shower of a room.

- **Air conditioning.** It allows turning the air conditioning on or off, as well as modifying the desired temperature or air speed.
- **Lighting.** The application presents a main list with all the points of light associated with the system and the lighting scenes established. This screen allows to modify the on and off, the brightness of the point of light or the modification of the LED color.
- **Blinds.** The user can open or close the blinds or curtains in his room.
- **Shower.** Our application allows activating the functions of warm up, bath filling or personalizing the touch switchfunction of the shower itself.



Services

Commissioning

The ROBOTBAS team supervises the installation, moving to the work site, and once it is completed, verifies the operation of the system and its devices.

When the establishment is ready to open its doors to general public, the technicians of ROBOTBAS configure the whole system and certify its operation, guaranteeing a perfect use in full guarantee.

Turnkey project

ROBOTBAS deals with the electrical installation, in addition to what was described in the previous section. It is the most complete installation option for our clients, starting with the project proposal and installation of the systems. Once approved, ROBOTBAS is responsible for the assembly of the system, installing all devices and auxiliary components.

In this way, ROBOTBAS controls the entire value chain, offering a higher level of guarantee.



Maintenance

Once the system is put into operation, the hotel's technical service receives training from ROBOTBAS to facilitate its management and maintenance.

Even so, if the client wishes, he can contract the maintenance service to ROBOTBAS, which guarantees the customer modifications of the SCADA or the automation program, installation reviews and preventive and corrective actions of the system, guaranteeing the client a comprehensive and comfortable service.

Remote support

The monitoring of the system and all its parts, can be done from a ROBOTBAS remote assistance service that allows the configuration of the installation equipment, and the necessary software update, without the need for travel.

This possibility facilitates the maintenance and control of the systems to customers and their technical services, ensuring a direct attention from the system's manufacturers.

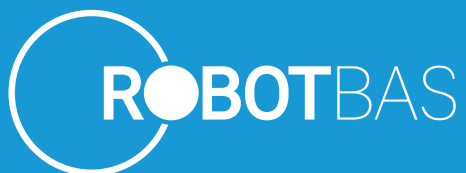
Repair and pieces sale

ROBOTBAS guarantees the repair and replacement of pieces up to 10 years after the product has gone to market.

This guarantees our customers a long-term after-sales service.

5 year guarantee

One of the differentiating factors of ROBOTBAS in its after-sales service is the 5-year guarantee that we offer to all our customers.



Spain | Headquarters

Gremi de Cirurgians i Barbers, 22
Polígono Industrial Son Rossinyol
07009 Palma de Mallorca
T. +34 971 244 471

Dominican Republic

Plaza Boulevard Center. Locales 4 y 6,
Carretera Higüey-Miches
Bávaro, República Dominicana
T. +1 829 380 4732

Mexico

Av. Bonampark Manzana 1, Lote 4 y 5
Local C 9, Super Manzana 8
Cancun Quintana Roo, 77500
T. +52 1 998 195 9060

www.robotbas.com | info@robotbas.com

a brand of **Robot**