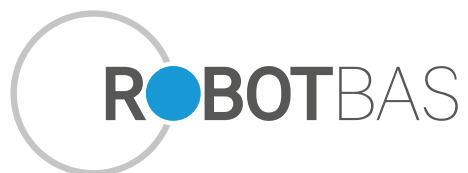




# MULTILINK



 **ROBOTBAS** a brand of ***Robot***



**Spain | Headquarters**

Gremi de Cirurgians i Barbers, 22  
Polígono Industrial Son Rossinyol  
07009 Palma de Mallorca  
T. +34 971 244 471

**Dominican Republic**

Plaza Boulevard Center. Locales 4 y 6,  
Carretera Higüey-Miches  
Bávaro, República Dominicana  
T. +1 829 380 4732

**Mexico**

Av. Bonampark Manzana 1, Lote 4 y 5  
Local C 9, Super Manzana 8  
Cancun Quintana Roo, 77500  
T. +52 1 998 195 9060

[www.robotbas.com](http://www.robotbas.com) | [info@robotbas.com](mailto:info@robotbas.com)

# Multilink

the new ROBOTBAS technology that unifies the most extended automation standards, such as KNX or BACnet.

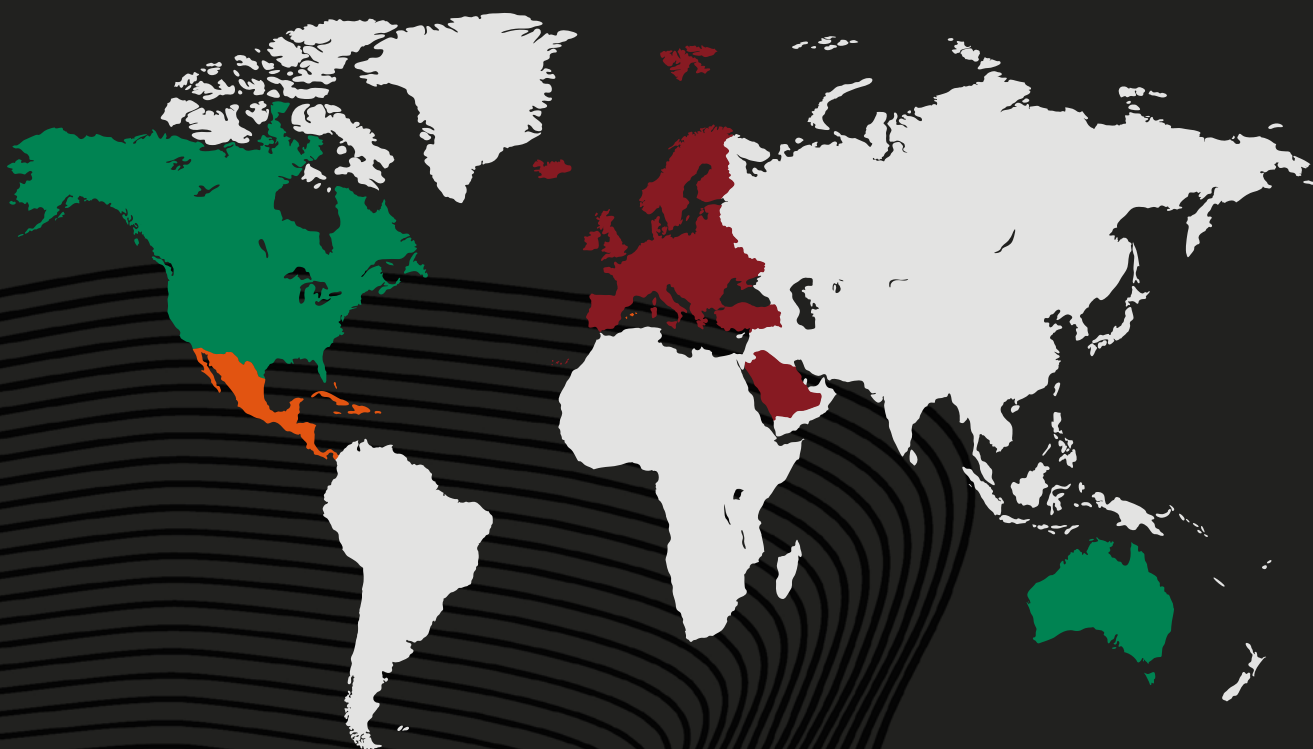


To date, building automation systems were designed to work with a single communication protocol. Multilink, the new technology developed by ROBOTBAS, **integrates the most extended communication standards**, converging in a single, disruptive and transversal concept.

Multilink **separates the communication module from the application module** (touch switches, light dimmers, etc.) obtaining a versatile product compatible with the main automation systems of the market such as KNX, BACnet and SiSLink among others.

Devices with Multilink technology facilitate maintenance, have fully customized interfaces and **make it possible to work with the usual communication protocol of the area** or the one specified in the project, among other advantages.

# More extended communication protocols by area



**KNX**

**BACnet**

**SiSLink/C3**



# Multilink advantages

- 1 | **Unification and improvement of the brand image** regardless of the location and technical requirements of the hotel.
- 2 | **Improvement of the user experience** thanks to the use of corporate designs and recognizable functionalities in all the establishments of the brand, independently of the communication protocol used.
- 3 | **User interface design**, as touch switches or screens, **totally customized** in iconographies, colours and logos, exportable to any installation.



- 4 | **Simplification of maintenance** when separating the communication module from the application module, constituting two elements electronically and mechanically independent.
- 5 | **Resolution of incidents** without need of specialized external staff.
- 6 | **Reduction of fixed assets in stock** of security to not need to replace the communication modules.



Multilink separates the communication module from the application module



- 7 | **Profitability increased** by reducing the time of blocked rooms due to breakdowns.
- 8 | Possibility of **working with the usual communication protocol** of the area or the one required in the project.
- 9 | **Optimization of the decision making** between promoter and exploitation when separating the technical installation from the design.







# LINK, TOUCH & SENSE, first families of Multilink devices

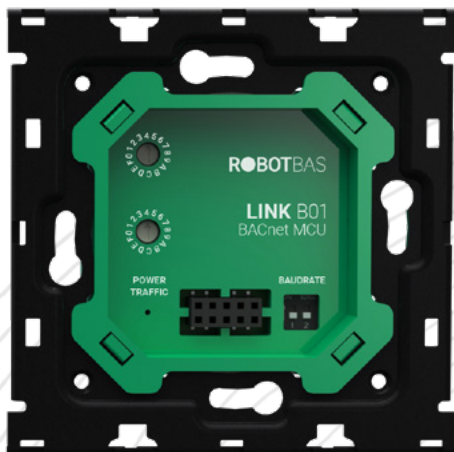
The first launch of mechanisms with Multilink technology is dedicated to user direct interaction. Currently, the **most important communication protocols** for building automation are already integrated: KNX that dominates the European and Middle Eastern market, BACnet that stands out in the United States or Canada and SiSLink that has a large presence in the Caribbean.

Among the different **available application modules** we can find: displays with OLED technology for climate control, touch switches with up to 6 functions, indicators for room service or temperature and movement sensors among others.



**LINK K01 S100**

Communication module for KNX bus, predominant in Europe and the Middle East.



**LINK B01 S100**

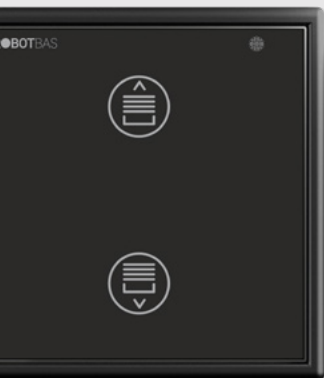
Communication module for BACnet bus, usual in North America and Canada.



**LINK C01 S100**

Communication module SiSLink/C3 bus, very used in the Caribbean area.

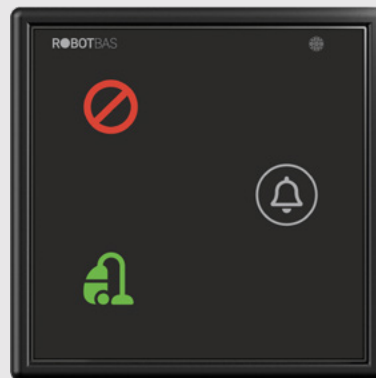
# TOUCH family



**TOUCH P21 JLS**



**TOUCH D10 JLS**



**TOUCH SD7531 JLS**



**TOUCH P40 JLS**

The mechanisms for user interface with frames compatible with the LS990 series have touch switches with capacitive touch technology, LED backlighting and haptic feedback. The high level of colors and iconographies personalization, together with the Gorilla Glass and the anti-fingerprint treatment, make it one of the best high end series on the market.

# SENSE family



**SENSE M01 JLS**

Infrared motion detector with 10 meters detection range.



**SENSE T01 JLS**

Ambient temperature probe.

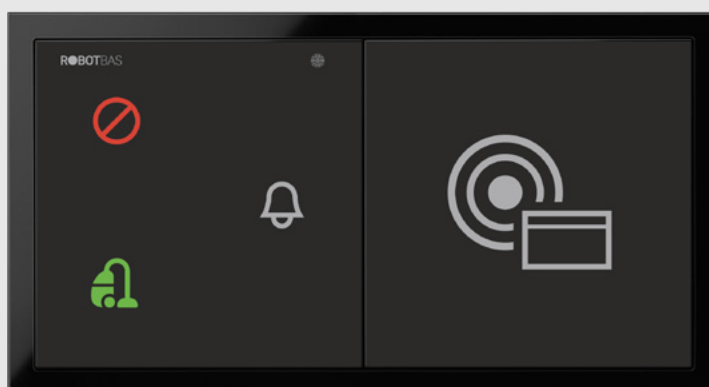
# Set of mechanisms

Multilink devices compatible with the S100 series allows to create sets of mechanisms that facilitate the guest's stay, both inside and outside the room.



**TOUCH P30 S100**

3 functions touch switches  
special for headboards (left side)  
with 2 USB ports.



**TOUCH S11 S100**

Service Display  
with bell touch  
switch.

**TOUCH C00 S100**

Smart card reader  
for access control.



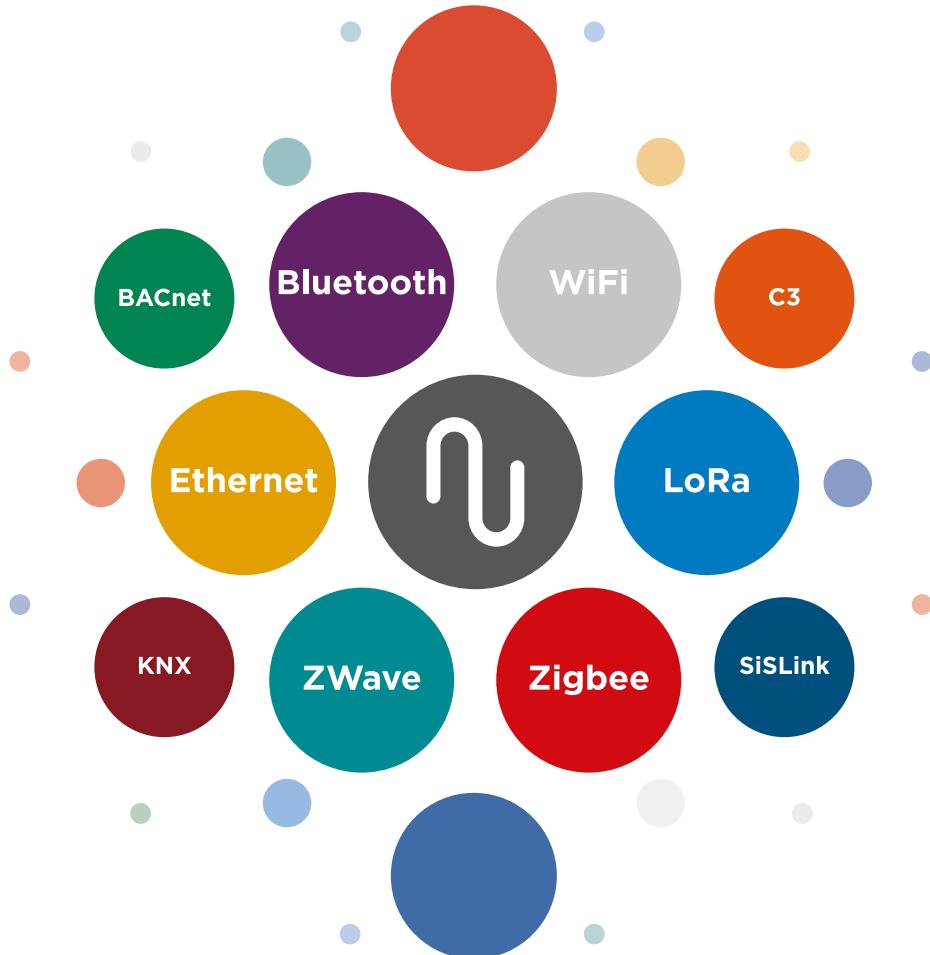
# The expansion of the Multilink universe

We live in a connected world where globalization and the concentration of population in large cities requires us to devise **new strategies to reduce energy consumption** and make an increasingly responsible use of natural resources. To achieve this goal, the IoT "Internet of Things" will play a fundamental role.

As Lord Kelvin said "When you can measure what you are speaking about, and express it in numbers, you know something about it". The IoT requires an infrastructure to connect the different sensors and services in the cloud. This type of applications requires high

flexibility and for this reason, **wireless communication protocols are currently prevalent in the sector.**

From ROBOTBAS, we always bet to be at the forefront of technology and, for this reason, **we will expand the MULTILINK universe with new communication modules for IoT** such as Ethernet, WiFi, Bluetooth, LoRa, ZWave or Zigbee among others, contributing to the smart city.



# New application modules for DIN rail and false ceiling

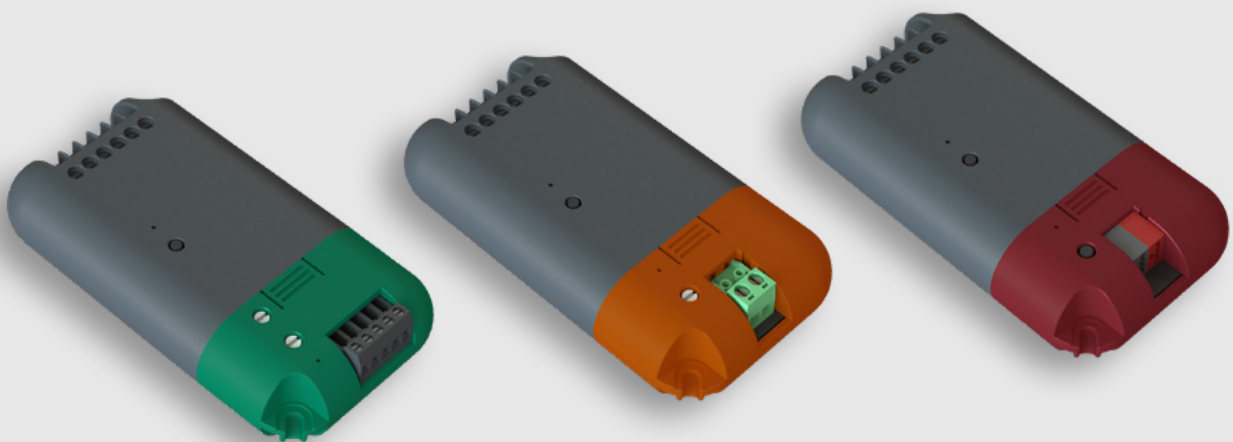
## DIN rail

Actuators of lighting, air conditioning, energy meters...



## False ceiling

Actuators of lighting, blinds...



# **ROBOTBAS Services**

## **Commissioning**

The ROBOTBAS team supervises the installation, configures and verifies the operation of the system and its devices, guaranteeing a perfect use with full guarantee.

## **Turnkey project**

ROBOTBAS deals with the electrical installation, in addition to what was described in the previous section. It is the most complete installation option for our clients, starting with the project proposal and installation of the systems. Once approved, ROBOTBAS is responsible for the assembly of the system, installing all devices and auxiliary components.

In this way, ROBOTBAS controls the entire value chain, offering a higher level of guarantee.

## **Maintenance**

Even so, if the client wishes, he can contract the maintenance service to ROBOTBAS, which guarantees the customer modifications of the SCADA or the automation program, installation reviews and preventive and corrective actions of the system, guaranteeing the client a comprehensive and comfortable service.

## **Remote support**

The monitoring of the system and all its parts, can be done from a ROBOTBAS remote assistance service that allows the configuration of the installation equipment, and the necessary software update, without the need for travel.

## **Repair and pieces sale**

ROBOTBAS guarantees the repair and replacement of pieces up to 10 years after the product has gone to market.

## **5 year guarantee**

One of the differentiating factors of ROBOTBAS in its after-sales service is the 5-year guarantee that we offer to all our customers.



# Robot

Robot, S.A. is a company specialized in building automation systems and domotic. We have made more than 700 projects over 38 years, hand in hand with the most important hotel brands in the world.

With the incorporation of Robot, S.A. to the Alternative Stock Market in February 2018 (also known as MAB), and the company's new international expansion plan, Robot launched ROBOTBAS, a brand responsible for the design, manufacture, marketing, installation and maintenance of Robot's building control systems.

In this way, the creation of ROBOTBAS allows Robot, S.A. to focus on the relationship with its investors, and on the development of a brand structure that favor the future diversification of the business model.

## ROBOTBAS

ROBOTBAS offer installation, commissioning, maintenance and remote support services for our building control systems, with the possibility of obtaining a turnkey project. Thanks to the participation in works from the project to the start-up, in ROBOTBAS we have all the experience acquired over the years by Robot, allowing us to improve and anticipate the needs of each installation.

We work with the main hotel brands

**PALLADIUM**  
HOTEL GROUP

  
**IBEROSTAR**  
HOTELS & RESORTS

  
**USHUAIA**  
UNEXPECTED HOTELS

The Excellence  
Collection

**HYATT**<sup>®</sup>

**MELIÀ** HOTELS  
INTERNATIONAL

**Hard Rock**  
HOTEL

 **PESTANA**

  
**Hilton**  
HOTELS & RESORTS

**OnlyYOU**  
HOTELS

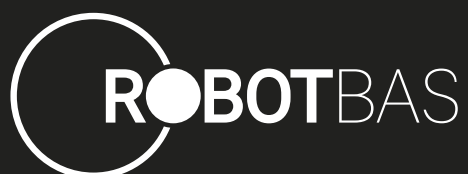
  
**MARRIOTT**

**Barceló**  
HOTEL GROUP

  
**ZAFIRO**  
HOTELS

**RIU**  
HOTELS & RESORTS

 **THB hotels**



**Spain | Headquarters**

Gremi de Cirurgians i Barbers, 22  
Polígono Industrial Son Rossinyol  
07009 Palma de Mallorca  
T. +34 971 244 471

**Dominican Republic**

Plaza Boulevard Center. Locales 4 y 6,  
Carretera Higüey-Miches  
Bávaro, República Dominicana  
T. +1 829 380 4732

**Mexico**

Av. Bonampark Manzana 1, Lote 4 y 5  
Local C 9, Super Manzana 8  
Cancun Quintana Roo, 77500  
T. +52 1 998 195 9060

[www.robotbas.com](http://www.robotbas.com) | [info@robotbas.com](mailto:info@robotbas.com)

a brand of **Robot**